

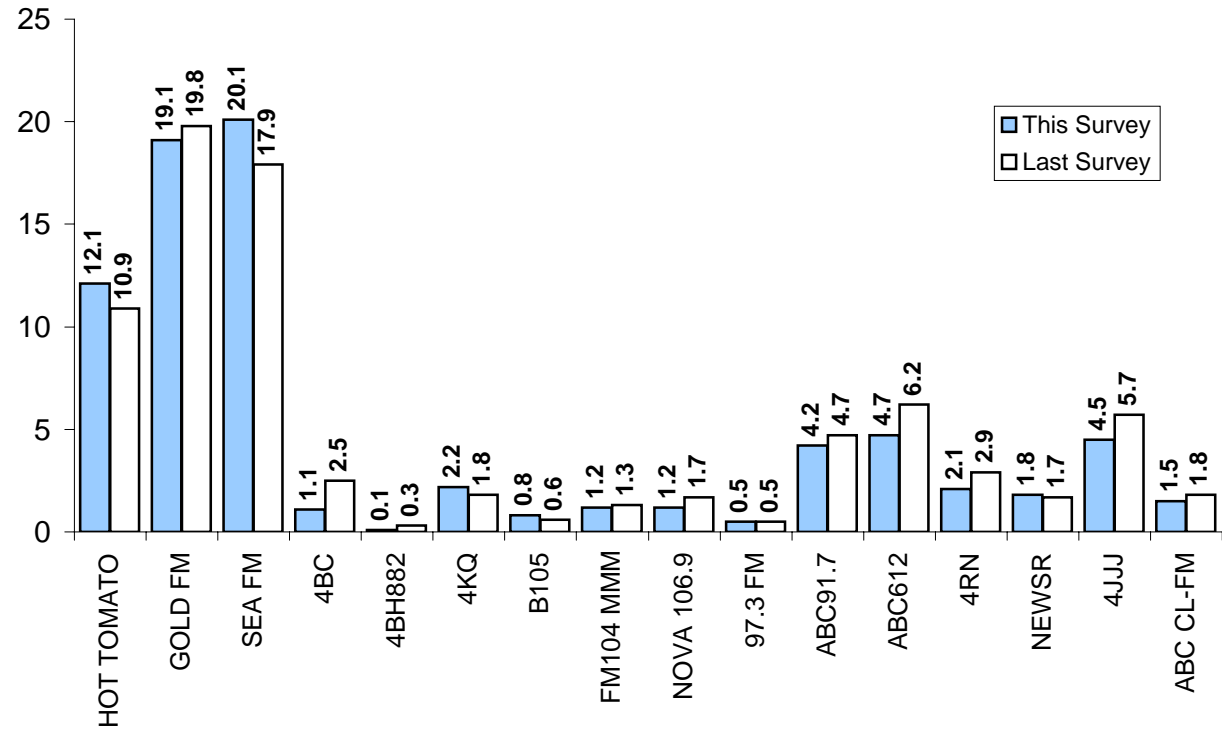
# Nielsen Media Research Radio Regional Summary Report

Survey #1 2007 (February 11 - April 7)

Previous: Survey #2 2006 (August 20 - October 14)

MON-SUN 5.30AM-12MN ALL PEOPLE 10+ (Previous Survey in Brackets)

	SHARE %	
HOT TOMATO	12.1	(10.9)
GOLD FM	19.1	(19.8)
SEA FM	20.1	(17.9)
4BC	1.1	(2.5)
4BH882	0.1	(0.3)
4KQ	2.2	(1.8)
B105	0.8	(0.6)
FM104 MMM	1.2	(1.3)
NOVA 106.9	1.2	(1.7)
97.3 FM	0.5	(0.5)
ABC91.7	4.2	(4.7)
ABC612	4.7	(6.2)
4RN	2.1	(2.9)
NEWSR	1.8	(1.7)
4JJJ	4.5	(5.7)
ABC CL-FM	1.5	(1.8)



## GOLD COAST/TWEED